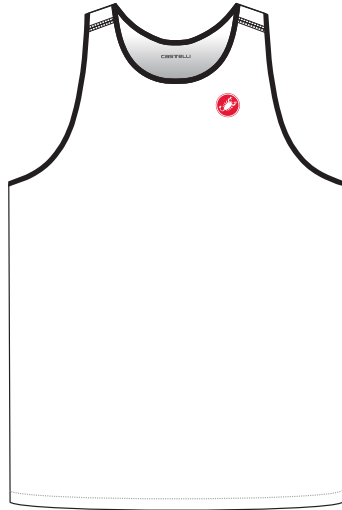


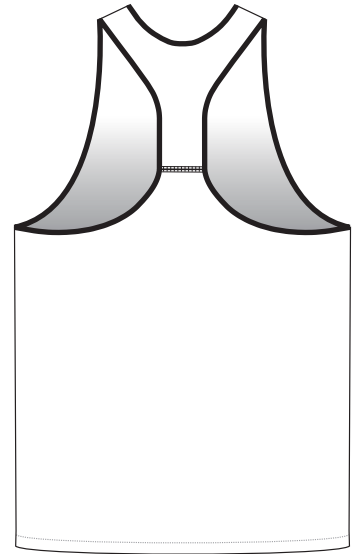


CASTELLI

WILDWOOD RUN SINGLET
TT0594
WILDWOOD W RUN SINGLET
TT0595



4



5



GRAPHICS WILL NOT ALIGN ACROSS SEAMS

LINE ART PANTONE (PMS) COLORS



FLUO



FLATLOCK STITCHING COLOR
BLACK OR WHITE



NOTES

PLEASE ENTER ADDITIONAL DESIGN INFORMATION HERE IF NEEDED

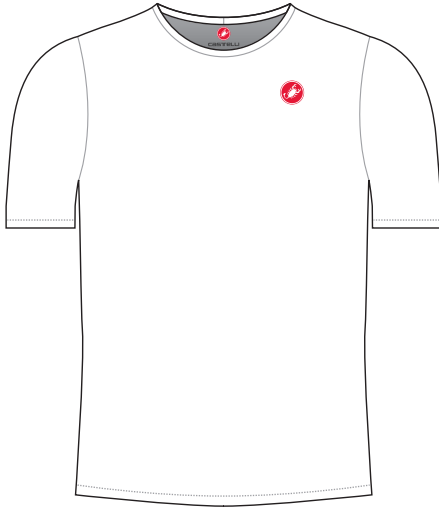
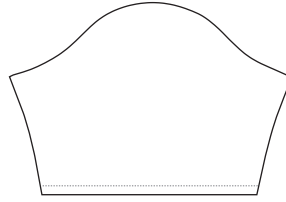
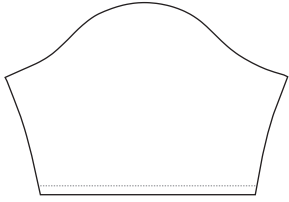
POLICIES AND PROCEDURES

PRODUCTION STARTS ONLY AFTER ORDER, DEPOSIT, AND ART IS APPROVED. ART PLACEMENT IS CONSIDERED TO BE APPROXIMATE IN POSITION AND SCALE. CASTELLI MAKES EVERY ATTEMPT TO MATCH THE LINE ART AS CLOSELY AS POSSIBLE TO THE FINISHED PRODUCT. DESIGN ELEMENTS THAT CROSS SEAM LINES CANNOT BE GUARANTEED TO LINE UP ON THE FINISHED PRODUCT. CUSTOMER AFFIRMS THEY HAVE PERMISSION TO USE ALL LOGOS CONTAINED IN THE PROVIDED ART FILES. PLEASE NOTE THAT FLUO PRINTING MAY AFFECT THE ACCURACY OF OTHER COLORS.

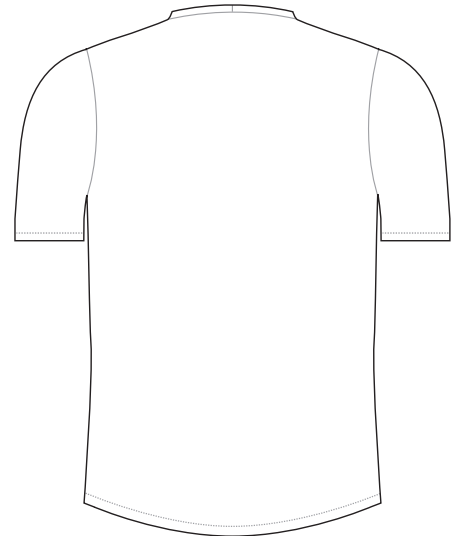


CASTELLI

TECH TEE SS
TT0543
TECH TEE W SS
TT0545



6



7



GRAPHICS WILL NOT ALIGN ACROSS SEAMS

LINE ART PANTONE (PMS) COLORS

####	####	####	####	####	####	####	####	####	####
------	------	------	------	------	------	------	------	------	------

FLUO

####	####	####	####
------	------	------	------

NOTES

PLEASE ENTER ADDITIONAL DESIGN INFORMATION HERE IF NEEDED

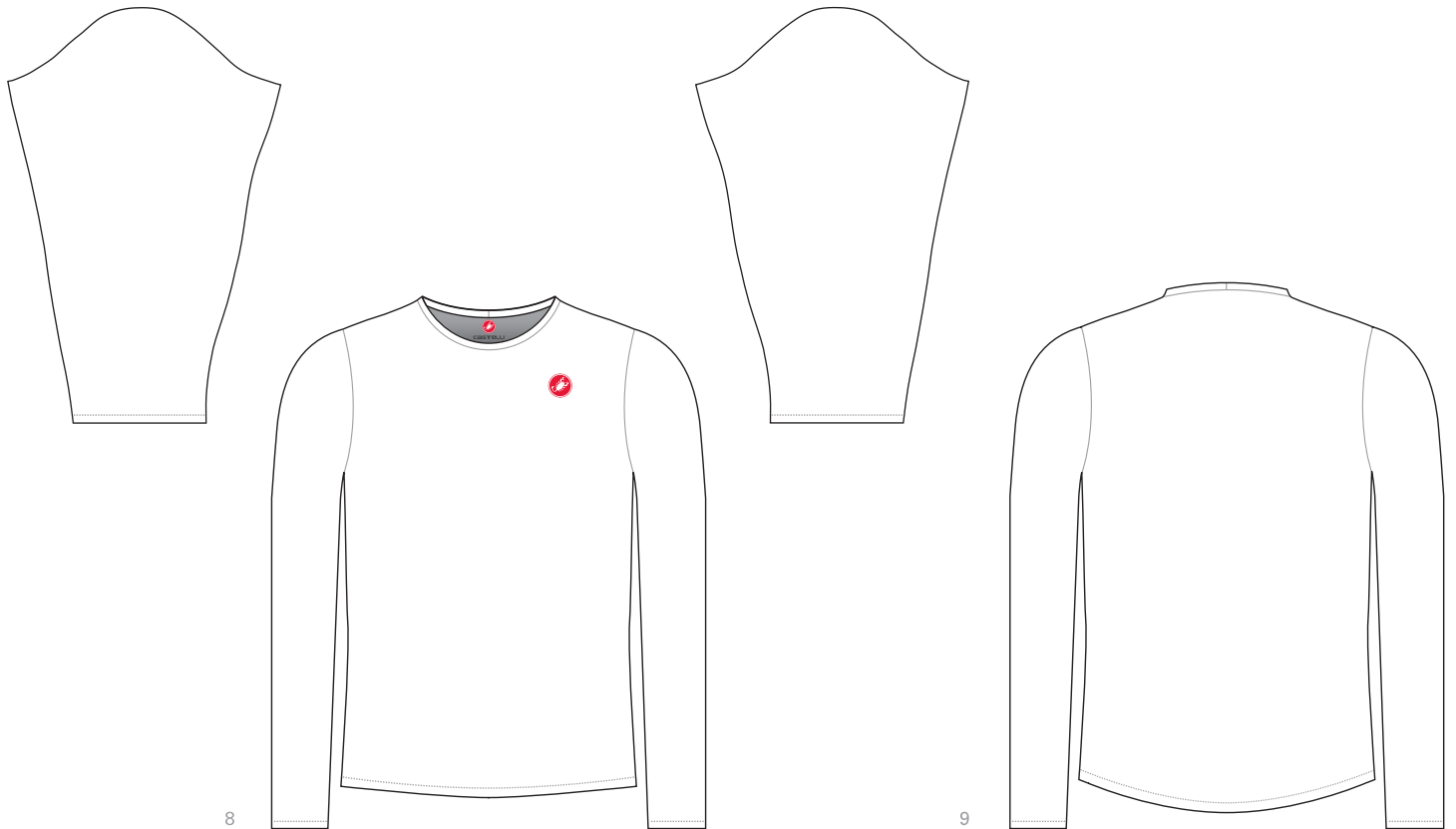
POLICIES AND PROCEDURES

PRODUCTION STARTS ONLY AFTER ORDER, DEPOSIT, AND ART IS APPROVED. ART PLACEMENT IS CONSIDERED TO BE APPROXIMATE IN POSITION AND SCALE. CASTELLI MAKES EVERY ATTEMPT TO MATCH THE LINE ART AS CLOSELY AS POSSIBLE TO THE FINISHED PRODUCT. DESIGN ELEMENTS THAT CROSS SEAM LINES CANNOT BE GUARANTEED TO LINE UP ON THE FINISHED PRODUCT. CUSTOMER AFFIRMS THEY HAVE PERMISSION TO USE ALL LOGOS CONTAINED IN THE PROVIDED ART FILES. PLEASE NOTE THAT FLUO PRINTING MAY AFFECT THE ACCURACY OF OTHER COLORS.



CASTELLI

TECH TEE LS
TT0544
TECH TEE W LS
TT0546



GRAPHICS WILL NOT ALIGN ACROSS SEAMS

LINE ART PANTONE (PMS) COLORS



FLUO



NOTES

PLEASE ENTER ADDITIONAL DESIGN INFORMATION HERE IF NEEDED

POLICIES AND PROCEDURES

PRODUCTION STARTS ONLY AFTER ORDER, DEPOSIT, AND ART IS APPROVED. ART PLACEMENT IS CONSIDERED TO BE APPROXIMATE IN POSITION AND SCALE. CASTELLI MAKES EVERY ATTEMPT TO MATCH THE LINE ART AS CLOSELY AS POSSIBLE TO THE FINISHED PRODUCT. DESIGN ELEMENTS THAT CROSS SEAM LINES CANNOT BE GUARANTEED TO LINE UP ON THE FINISHED PRODUCT. CUSTOMER AFFIRMS THEY HAVE PERMISSION TO USE ALL LOGOS CONTAINED IN THE PROVIDED ART FILES. PLEASE NOTE THAT FLUO PRINTING MAY AFFECT THE ACCURACY OF OTHER COLORS.