

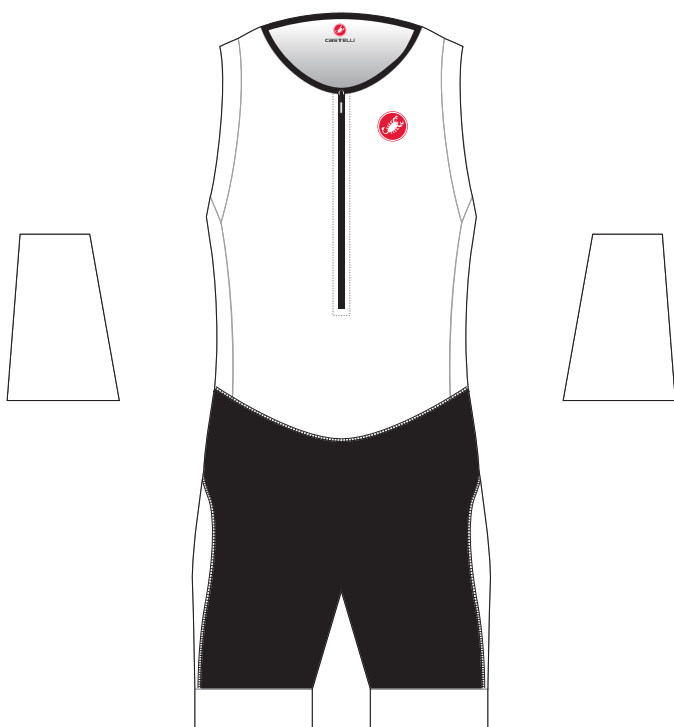


# CASTELLI

**FREE TRI SUIT**  
**TT0283**  
**FREE W TRI SUIT**  
**TT0288**



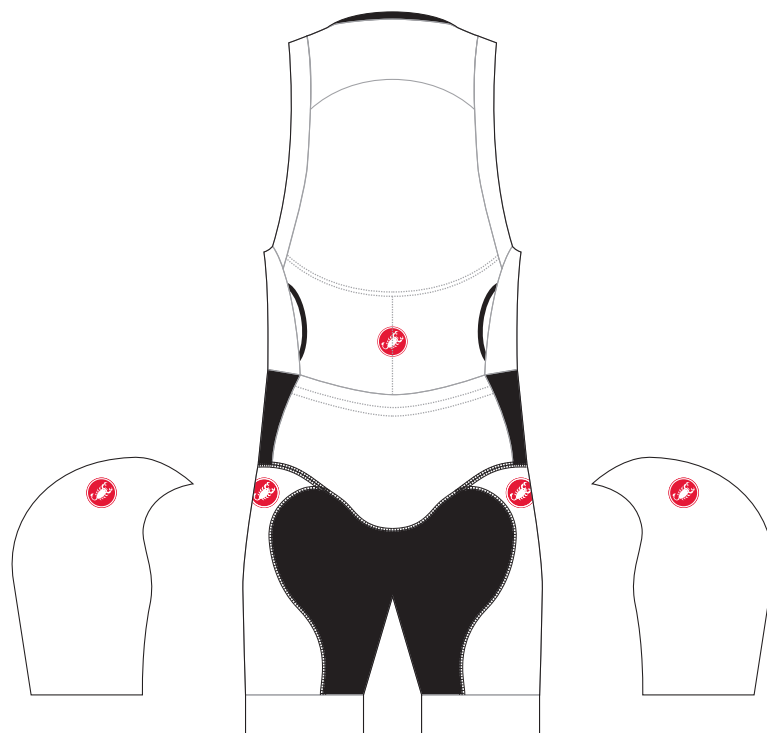
**EXPOSED ZIPPER**



4



**GRAPHICS WILL NOT ALIGN ACROSS THE SEAMS**



5

## LINE ART PANTONE (PMS) COLORS



## FLUO



## GUSSET COLOR

BLACK, ANTHRACITE, NAVY, RED



BLACK

## FLATLOCK STITCHING COLOR

BLACK OR WHITE



BLACK

## NOTES

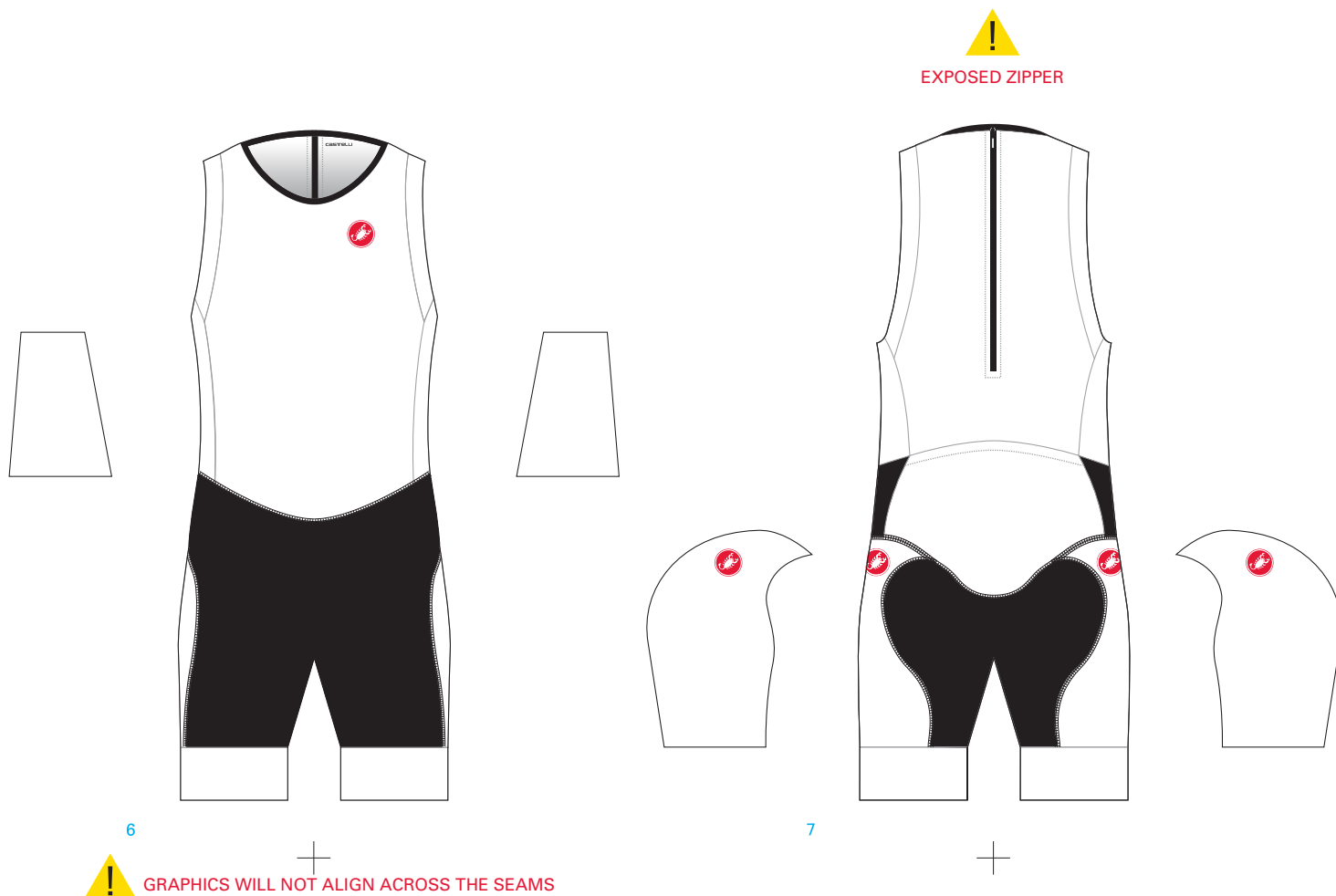
PLEASE ENTER ADDITIONAL DESIGN INFORMATION HERE IF NEEDED

## POLICIES AND PROCEDURES

PRODUCTION STARTS ONLY AFTER ORDER, DEPOSIT, AND ART IS APPROVED. ART PLACEMENT IS CONSIDERED TO BE APPROXIMATE IN POSITION AND SCALE. CASTELLI MAKES EVERY ATTEMPT TO MATCH THE LINE ART AS CLOSELY AS POSSIBLE TO THE FINISHED PRODUCT. DESIGN ELEMENTS THAT CROSS SEAM LINES CANNOT BE GUARANTEED TO LINE UP ON THE FINISHED PRODUCT. CUSTOMER AFFIRMS THEY HAVE PERMISSION TO USE ALL LOGOS CONTAINED IN THE PROVIDED ART FILES. PLEASE NOTE THAT FLUO PRINTING MAY AFFECT THE ACCURACY OF OTHER COLORS.


**CASTELLI**

**ITU SUIT**  
**TT0539**  
**ITU W SUIT**  
**TT0540**



### LINE ART PANTONE (PMS) COLORS



### FLUO



### GUSSET COLOR

BLACK, ANTHRACITE, NAVY, RED



### FLATLOCK STITCHING COLOR

BLACK OR WHITE



### NOTES

PLEASE ENTER ADDITIONAL DESIGN INFORMATION HERE IF NEEDED

### POLICIES AND PROCEDURES

PRODUCTION STARTS ONLY AFTER ORDER, DEPOSIT, AND ART IS APPROVED. ART PLACEMENT IS CONSIDERED TO BE APPROXIMATE IN POSITION AND SCALE. CASTELLI MAKES EVERY ATTEMPT TO MATCH THE LINE ART AS CLOSELY AS POSSIBLE TO THE FINISHED PRODUCT. DESIGN ELEMENTS THAT CROSS SEAM LINES CANNOT BE GUARANTEED TO LINE UP ON THE FINISHED PRODUCT. CUSTOMER AFFIRMS THEY HAVE PERMISSION TO USE ALL LOGOS CONTAINED IN THE PROVIDED ART FILES. PLEASE NOTE THAT FLUO PRINTING MAY AFFECT THE ACCURACY OF OTHER COLORS.



**CASTELLI**

**FREE TRI SANREMO SS SUIT**

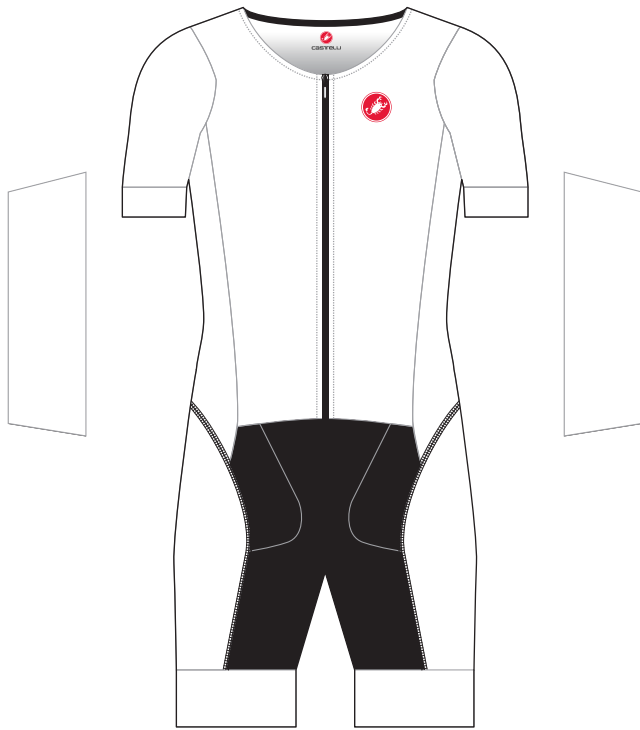
**TT0298**

**FREE TRI SANREMO W SS SUIT**

**TT0541**



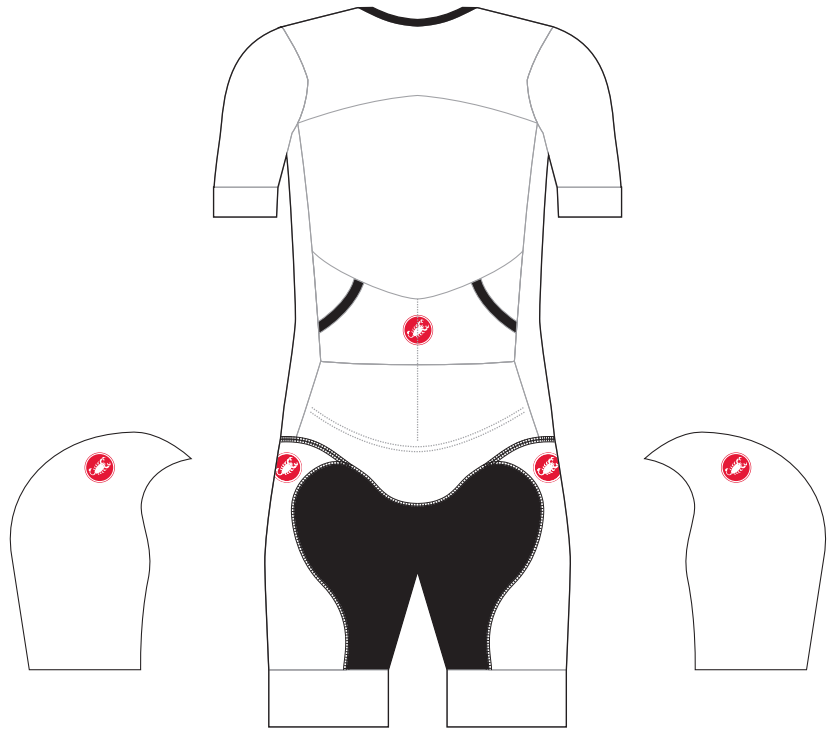
**EXPOSED ZIPPER**



8



**GRAPHICS WILL NOT ALIGN ACROSS THE SEAMS**



9

### LINE ART PANTONE (PMS) COLORS



### FLUO



### GUSSET COLOR

BLACK, ANTHRACITE, NAVY, RED



BLACK

### FLATLOCK STITCHING COLOR

BLACK OR WHITE



BLACK

### NOTES

PLEASE ENTER ADDITIONAL DESIGN INFORMATION HERE IF NEEDED

### POLICIES AND PROCEDURES

PRODUCTION STARTS ONLY AFTER ORDER DEPOSIT AND ART IS APPROVED. ART PLACEMENT IS CONSIDERED TO BE APPROXIMATE IN POSITION AND SCALE. CASTELLI MAKES EVERY ATTEMPT TO MATCH THE LINE ART AS CLOSELY AS POSSIBLE TO THE FINISHED PRODUCT. DESIGN ELEMENTS THAT CROSS SEAM LINES CANNOT BE GUARANTEED TO LINE UP ON THE FINISHED PRODUCT. CUSTOMER AFFIRMS THEY HAVE PERMISSION TO USE ALL LOGOS CONTAINED IN THE PROVIDED ART FILES. PLEASE NOTE THAT FLUO PRINTING MAY AFFECT THE ACCURACY OF OTHER COLORS.